

■ SSAA SPRING has Sprung.

Even in this 'triple dip' recession our SSAA Spring Exhibition was a jolly and most enjoyable event. More than 80 works were admitted and exhibited from members along with three key invited works from our guest artist, Gordon Mitchell, RSA RSW RGI.

Gordon Mitchell reviewed all the works and remarked upon the high quality of each piece before selecting the three submissions from Philip Spence (Glasgow) as the 'SSAA Award' Winner for the best group of pictures and a picture by M Stewart Hume for the Donnie Webster Prize for the best work on show 2013.

There was a substantial attendance at the Preview on Monday evening followed by 250 visitors attending during the exhibition week. Seven sales were achieved including three unframed works from the browsers. The Society again maintained its tradition of holding a Vernissage for preview guests and artists to meet over a light dinner at nearby Glass and Thompson. Animated conversation and happy faces continued till late into the night and suggest that Society remains in good spirits. The next SSAA Exhibition will be held in late summer or autumn as there is no plan this year for an SSAA Summer Exhibition.

■ SAI Exhibition 21 April - 19 May Anise Gallery, Shad Thames, London.

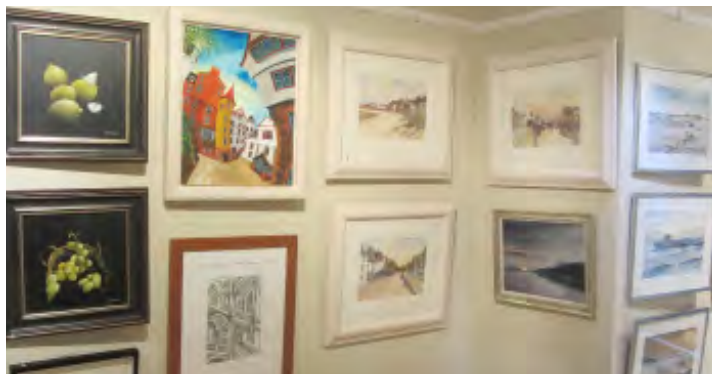
"Stories in Light and Line" is an Exhibition of excellent architectural illustrations, sketches and paintings by members of the Society of Architectural Illustration on at the Anise Gallery, London.

At the SAI Annual Conference in London on Saturday 20 April, the possibility of resurrecting the moribund SAA (Society of Architect-Artists) was informally discussed. David Rock has apparently passed on documents and SAI President elect Richard Rees is now examining options which could re-energise the SAA.

Ligne et Couleur newsletter **MAY** 2013



SSAA Spring Exhibition '13 at the Dundas St Gallery



below: SAI Exhibition, The Anise Gallery, London



Scottish Society of Architect-Artists.

www.ssaagallery.org.uk

■ NEW INITIATIVES sunday 7th

Some enterprising SSAA members are this summer proposing to participate in a number of other events including the annual Pittenweem Festival 3rd - 11th August, and the Dunked Art Festival from 20 June to 29 August 2013.

Even more enterprising is the proposed "At Home" exhibition on Saturday 11th May by SSAA members Iain Maclaren, Alan Cook, along with Willie Hanlon, at Craighdu Farm Cottages, Chestnut Lane, Milngavie G62 7HR. They have generously extended an invitation to SSAA members in the area who will be welcome to attend their reception between 2pm and 7 pm on 11th May.

■ TAYSIDE ARCHITECT ARTISTS

A group of SSAA members in the Tayside Area encouraged by John Picken and Andy Baxter will be holding a Regional SSAA Exhibition at the very attractive Dundee Botanic Garden.

It has been proposed that this could also be an interesting venue for an SSAA "Paint and Pint Day" which will give us all an opportunity to visit the exhibition and appreciate the excellent environs, plants and buildings at this special Dundee location.

The 'Paint and Pint Day' will be an informal event likely to be held on Sunday 21st July but it would be extremely helpful to know who might be planning to attend in order that we can convene at an appropriate location and agree a start and finish time.

Contact: Secretary 0131 552 2620 or Stuart@trinitygrove.demon.co.uk

More information and images from the Paris and Venice Exhibitions 2013 is available on the web site:

www.SSAAGALLERY.org.uk



The Associazione of Architetti Artiste (AAA) exhibition theme "Urban Tales" was followed more rigorously by some submissions than by others, as was the advisory size restriction?.

The bright red banner denoted the entrance and attracted attention from passers-by ensuring a crowd at the Finissage. SSAA members: Charina Beswick; Peter Allam; John Picken; Bob Anderson and Ian Stuart Campbell had pictures in this exhibition.



Architect Artists from all across Europe attended the opening event of the Paris Ligne et Couleur Exhibition on March 27th. SSAA members Peter Allam, John Picken, Vasile Toch, Bob Anderson and Ian Stuart Campbell submitted.

The vast civic Grand Hall in Mairie 6e Paris with its chandeliers and ceiling frescoes requires screens and supplementary lighting to exhibit artworks within the space. It is nevertheless an impressive venue which facilitates good viewing of each work and plenty of circulation space.