

SCOTTISH SOCIETY OF ARCHITECT-ARTISTS

# Ligne et Couleur



WEE SALVATORE MUNDI by MIKE SHEPLEY

group exhibition of artworks by Scottish Architect-Artists

**“UPSTAIRS @ J&GINNES”**

105-107 South Street St Andrews Fife



The Scottish Society of Architect-Artists, founded in 1987 by architects interested in wider arts beyond their first discipline, now exhibits drawing, painting, sculpture, jewellery, photography, print-making and experimental art for public exhibition.

Membership of the Scottish Society of Architect Artists is open to architects, landscape architects, students, and to persons involved in architectural practice in Scotland, past and present.

SSAA is an Associated Society of the Royal Incorporation of Architects in Scotland although entirely independent of RIAS. The Society is also Affiliated with "Ligne et Couleur" Paris, and enjoys reciprocal exhibition arrangements with counterparts in France; Germany; Italy and Poland.

If you would like to know more about  
SSAA membership visit: [www.ssaagallery.co.uk](http://www.ssaagallery.co.uk)  
or contact:

Charina Beswick SSAA Membership,  
91 Townhill Road Dunfermline  
Fife KY12 0BW

# “UPSTAIRS @ J&GINNES”

105-107 South Street St Andrews Fife

**1st SEPTEMBER - 30th SEPTEMBER 2018**

gallery open 10-5pm mon-sat; sun 12.30-4.30pm



UPSTAIRS GALLERY South St St Andrews by Andrew Baxter

*“Dialogue between art and architecture,  
artist and architect has never been so vital,  
so needed. It must be seeded in an art school and it  
must be sustained throughout professional life.”*

*James Cosgrove*



SSAA Life drawing workshop at Leith School of Art tutored by Kenneth le Riche.

## RECENT EXHIBITION ACTIVITY @ SSAA

**2014 SSAA “Ligne et Couleur”** winter exhibition at the Barony Centre, West Kilbride, Ayrshire brought together a wide range of art-works by Scottish and European architect-artists displaying a variety of techniques in Acrylic, Oil, Ink and watercolour and portrayed traditional and modern landscapes, life drawing, collages, printing and silk creations.

### **2015 “ART4X” SSAA exhibition**

The 2015 Winter Exhibition of SSAA was held in January in support of research into autism at the Patrick Wild Centre at Edinburgh University. The exhibition took place in the spectacular Sculpture Court at ECA and in excess of 200 art items were exhibited, sold and auctioned raising more than £10k for this very important cause.

### **2016 “The Vital Art” Festival of Architecture Exhibition**

Celebrating the century since the establishment of the Royal Incorporation of Architects in Scotland in 1916 “The Vital Art” exhibition curated by SSAA recorded that Scotland has excelled in so many aspects of innovation, architecture and design. This exhibition toured widely to venues including: Glasgow Arts Club; Meffan Gallery Forfar; Scottish Arts Club Edinburgh; RGI Kelly Gallery Glasgow; Stirling Smith Gallery, Stirling; and Dunfermline. Fire Station Creative.

### **2017 “A Revitalised Art”**

Two group exhibitions were held during 2017 in: the Upstairs Gallery @ G&J Innes St Andrews, and at: the Scottish Arts Club, Edinburgh. Both were well attended and exceeded our ‘unofficial’ target to sell in excess of 10% of our exhibited works. We were also delighted that even after several very busy and prestigious years of busy Festival involvement we had a good percentage of our membership continuing to create new work and actively exhibit with us. As our Society is a charitable organisation we depend totally upon energy, enthusiasm and volunteer effort to bring these workshops and exhibitions to fruition.





SSAA's John Redbond attending a Chinese Stamp carving workshop 2018



SSAA's Exhibition in the splendid Barony Centre, West Kilbride (above) and occupying the Sculpture Court, at Edinburgh College of Art (below)





IAN STUART CAMPBELL

Falkland Palace Fife

ALAN COOK

Portofino Liguria Italy





JOHN REDBOND

Reptile

JOHN C JOHNSON

Kingsbarns





# IAIN W D FORDE

Portrait of Alasdair Gray



# MICK DUNCAN

Child Dream  
Parrot Dream







KAREN CAIRNS

Honey Bunny  
Royal and Ancient



# JOHN PICKEN

Mint Tea Lemons  
Doocrags, St Salvators







M STEWART HUME      Entering Tarbert

PHILIP SPENCE      Cairngorm

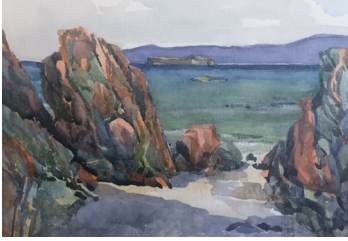


SANDY GRACIE

Football Match Culross  
Culross Street







George Mcl Keith

Pulpit and Red Rock, Iona  
Blue Skies of Cadoques

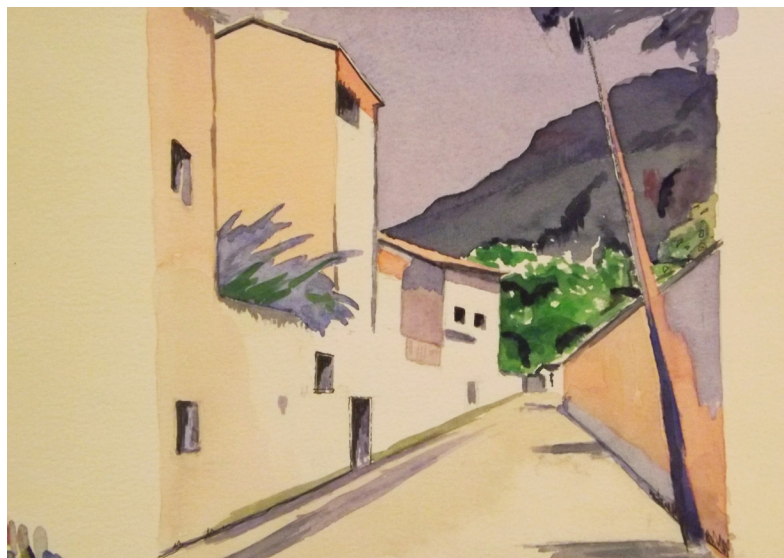




# ANDREW BAXTER

Crail Harbour  
West Sands St Andrews  
St Monans Harbour





PETER ALLAM

Heat of the Day

JOHN G DUNBAR

Rock Cottage Pittenweem





ROBERT A J MOODIE

"Life of Pi"

After Harvest, Kingsbarns





JOHN DAVIE

Harbour Reflections St Monans  
East Shore Pittenweem





NEIL ROSS

Still Waters  
Wharf Burntisland







MIKE SHEPLEY

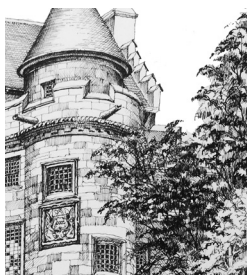
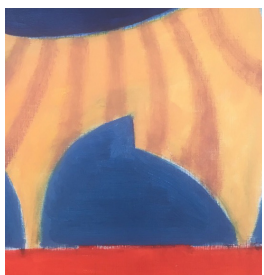
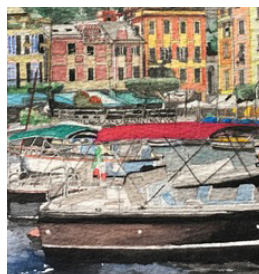
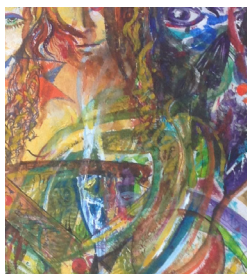
Storm over Bass Rock

WILLIAM WOOD

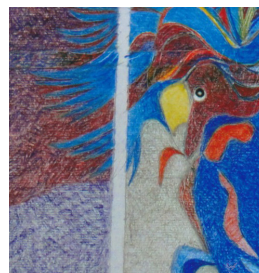
Crichton Castle



**UPSTAIRS@J&GINNES:** 105-107 South St **ST ANDREWS**



**1st - 30th SEPTEMBER 2018** 10-5pm mon-sat; sun 12.30-4.30pm

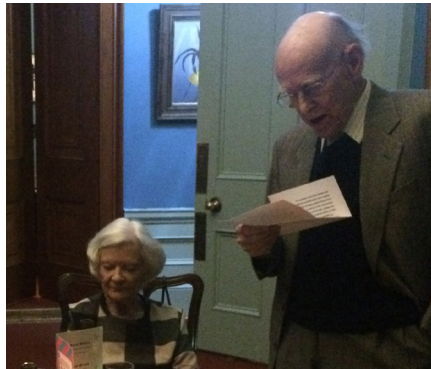


**SCOTTISH SOCIETY OF ARCHITECT ARTISTS**

**AUTUMN EXHIBITION**

Throughout 2018 SSAA has been celebrating three decades of exhibiting high quality artworks by architect-artists around Scotland. During our traditional 'Vernissage' at our Spring Exhibition in The Scottish Arts Club, Edinburgh, we were honoured to be addressed by the Society's founder and Honorary Fellow, Hamish Haswell Smith.

Hamish wittily recalled how in 1987 he travelled to Paris to negotiate affiliate status with the already well established 'Ligne et Couleur'. In spite of awkward translation protocols SSAA now enjoys strong reciprocal relations with each of the European Societies and will be participating in the Venice Biennale 2018 with ASSOCIAZIONE ARCHITETTI ARTISTI (AAA) .



SSAA founder Hamish Haswell Smith with Patron HRH Duke of Gloucester and at the "vernissage"

## **Hamish Haldane Haswell-Smith RIBA FRIAS HonFellow SSAA**

Hamish Haswell-Smith was born in Glasgow and achieved early entry to the Royal Technical College (Strathclyde University), Glasgow, where he completed his first year in architecture studies before transferring to Edinburgh College of Art. In 1955 Hamish married and set up practice in Nairobi, returning to UK in 1960 where he was elected a Fellow of the RIAS and served for a time on RIAS Council. Hamish was also elected President of the Scottish Arts Club (1982-84) and in 1985 he became a member of the Society of Architect-Artists.

This organisation however seemed so essentially London-centric that in 1987 he gathered together a small group of like-minded Scottish architects and founded the Scottish Society of Architect-Artists. Hamish Haswell Smith is member no 1, and was President of the Scottish Society of Architect-Artists from 1987 - 1990. He continues to participate regularly in each SSAA exhibition but regrettably he will be absent from our current show as he has a major retrospective of his paintings currently showing at The Scottish Arts Club in Edinburgh.

Hamish's joint enthusiasm for both sailing and for painting led him to produce his best-selling books 'The Scottish Islands' and 'An Island Odyssey' illustrated with his own beautiful drawings and paintings. Now acknowledged as the definitive guides to the Scottish Islands they have run to several editions including an Italian translation.



THE OLD OAK IN SUMMER : HAMISH HASWELL SMITH



JANDARA IN THE KYLE OF SCARP : HAMISH HASWELL SMITH



[www.ssaagallery.co.uk](http://www.ssaagallery.co.uk)



*“Architecture, of all the arts,  
is the one which acts the most slowly,  
but the most surely, on the soul.”*

*Ernest Dimnet*

**SCOTTISH SOCIETY OF ARCHITECT-ARTISTS**

PATRON: HRH THE DUKE OF GLOUCESTER KG GCVO SCOTTISH CHARITY No: SCO 13097